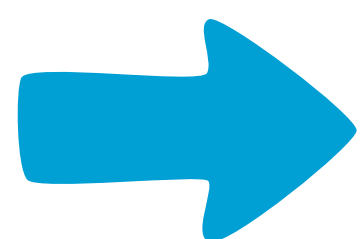




Join the C.A.R.E. Collaborative (Comprehensive Approach to Reduce ED Transfers)

The C.A.R.E. Collaborative is a VCH/PHC-wide Quality Improvement initiative focused on reducing avoidable Emergency Department transfers from Long-Term Care (LTC) Homes. By strengthening clinical decision-making, improving communication, and supporting timely, patient-centered care, we can ensure residents receive the right care, in the right place, at the right time.

We're inviting 25 Care Homes to join this collaborative effort to reduce preventable harm and optimize care in the LTC Homes.



[Click here for more information and sign up](#)