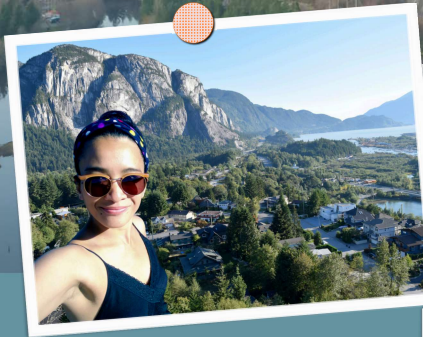


CONSIDER LIFE IN SQUAMISH



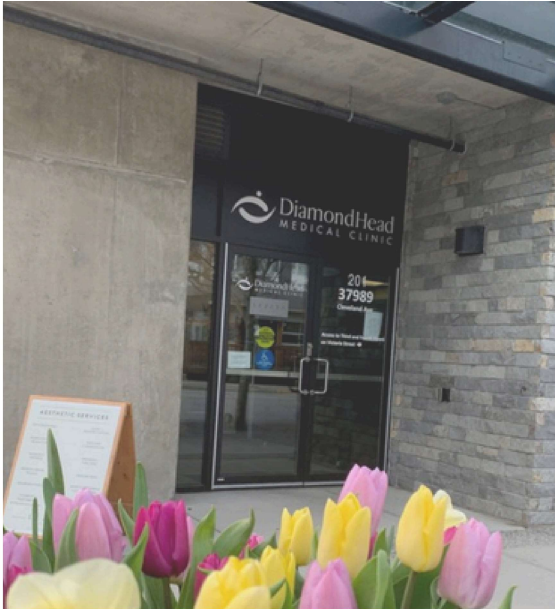
- Squamish has four full service family practices and a Walk in Clinic that serve the **young and growing community** of approximately 25,000 residents.
- Squamish offers the **best of rural and urban amenities**, with a young median age, a culture of **extensive outdoor activity**, and eclectic restaurants, brew pubs and distilleries. The community is home to a network of standard **public elementary, middle and high schools**, with French Immersion programs and the independent Francophone Ecole Les Aiglons. Several private schools exist across all age groups, and the community is excited to welcome broader Capilano University programming back, with intake scheduled for September 2024 at the former Quest University Campus.
- Squamish residents are privileged to live less than an hour from Whistler's world-renowned downhill ski and snowboard terrain, and the Callaghan Valley Cross Country Ski area. Outside of ski season, mountain bike terrain of all kinds is easily accessible, while those who prefer climbing, hiking, kayaking, kiteboarding, sailing or paddle boarding, can easily stay entertained.
- One of the attractive perks working in Squamish can potentially provide is the opportunity to **participate in ER or Obstetrical care**; we are the closest small community to Vancouver in which Family Physicians can still practice ER Medicine - and we have a robust (REEF-funded) "training" program which can support ER-competent and interested Family Physician candidates (including those without PGY 3 ER training) in safely and easily integrating into ER Physician practice.

THE ADVENTURE AWAITS!

 recruitment@nsdivision.ca

DIAMOND HEAD MEDICAL CLINIC

201 - 37989 Cleveland Ave, Squamish



The Diamond Head Medical Clinic (DHMC) is a physician-owned family practice in downtown Squamish, BC. We are a 12 Physician & 1 Nurse Practitioner clinic which hosts various specialists, including pediatricians in our space. Our clinic management is outstanding, and we have among the most reliable and professional staff you will find in any medical setting. Our modern space is in Squamish's premier professional building within the community's revitalized downtown core, and provides a suite of fully equipped exam rooms, while boasting unblocked views of the Squamish Chief and of Mount Garibaldi.

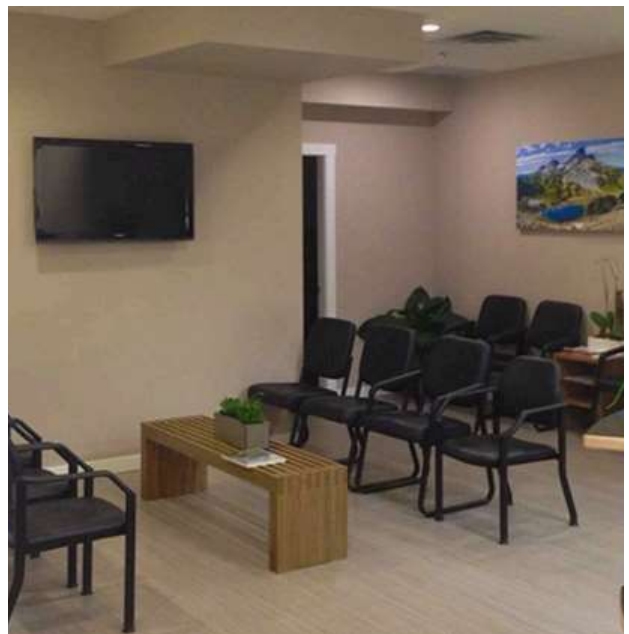
We are looking for new physicians to help service our rapidly growing community. New recruits will have no problem filling their panels with the thousands of unattached patients in Squamish seeking medical care. Helping with clinic overflow would also be most appreciated and lucrative for new recruits.

Practice Details

- 12 family physicians & 1 NP
- Access to 2 exam rooms per shift
- EMR: Med Access / Telus Health
- Hours: Mon - Fri 9AM - 5PM

Physician may choose to practice between either the longitudinal family practice (LFP), New-To-Practice (NTP) or fee-for-service (FFS) contracts.

The financial agreement and billing split will be negotiated.



For more information, please contact the Recruitment Coordinator at recruitment@nsdivision.ca

SQUAMISH MEDICAL CLINIC

37979 Cleveland Ave, Squamish, BC V8B 0B1



Squamish Medical Clinic is a multidisciplinary office with five family physicians, physiotherapists, massage therapists, audiology services, a chiropractor, and an osteopath.

Each family physician typically works 2-3 days per week in the office and has two examination rooms during their office hours.

The office space includes a procedure room, a small kitchen, and a bathroom with a shower.

Practice Details

- 5 family physicians
- Access to 2 exam rooms per shift and a procedure room
- EMR: Intraprofile

Physician may choose to practice between either the longitudinal family practice (LFP), New-To-Practice (NTP) or fee-for-service (FFS) contracts. The financial agreement and billing split will be negotiated.

For more information, please contact the Recruitment Coordinator at recruitment@nsdivision.ca

ELAHO MEDICAL CLINIC

1337 Pemberton Ave, Squamish, BC

Elaho Medical Clinic is a full-service Physician-owned Family Practice Clinic which has been conveniently located in downtown Squamish for the past 14 years. The Clinic is a beautiful and highly functional working space, which was purpose-designed to facilitate Team-Based care delivery-and at various times in our history we have shared space in patients with Physiotherapists, Chiropractors, Registered Massage Therapists, Dieticians, TCM Practitioners, and a Nurse-in-Practice.

Our Clinic has been an RII teaching practice for the past three years - and I would definitely encourage any potential applicants to speak with one or more of the Residents who have spent time with us in the past year or two for a more fulsome picture of the Clinic's strengths and attractive features...

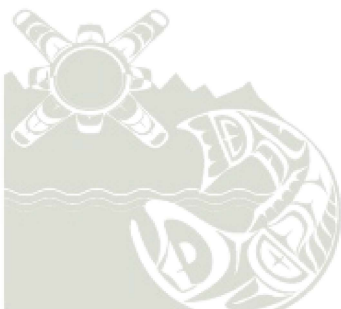
The Physicians and staff of the Elaho Medical Clinic are very much looking forward to meeting you and working alongside of you in caring for both our patients and our community!

Physician may choose to practice between either the longitudinal family practice (LFP), New-To-Practice (NTP) or fee-for-service (FFS) contracts. The financial agreement and billing split will be negotiated.



Practice Details

- 5 full-time physicians, 3 MOAs and 1 office manager
- We have a chiropractor, two registered massage therapists, an osteopath, and a therapist available in office.
- Hearing life audiology is also located within our building.
- We have 1 treatment room for minor procedures as well as 8 exam rooms.
- Profile (Intrahealth) EMR
- Located within a strip mall, with free parking next to a Shoppers Drug Mart and steps away from Save on Foods pharmacy.
- Hours Monday to Friday, 9:00 am – 5:00 pm



ELAHO
MEDICAL
CLINIC

For more information, please contact the Recruitment Coordinator at recruitment@nsdivision.ca



CONSIDER LIFE IN WHISTLER

Whistler is home to a main primary care clinic, with urgent care and diagnostic services and two full service family practices. As a year-round resort destination, Whistler's **14,000 residents** and significant visiting work force keep the ski runs and bike trails running, and local family physicians busy. With **gorgeous clinics, amazing colleagues** and access to some of the world's most stunning recreational spaces, Whistler is an incredible place to **launch your career in Family Practice Medicine.**

Whether you prefer snow or slate, Whistler boast internationally recognized skiing and snowboarding opportunities, gorgeous Olympic calibre skate –ski and freestyle infrastructure, and world-class mountain-bike parks and trails.

The community is home to robust road biking communities, and with a large number of local lakes close by, it's an triathlete's paradise. And of course with great fun comes great responsibility; enjoy the numerous brew pubs, distilleries and fine-dining establishments. Or if it's more your style, kick back at a café or food truck and catch a performance under the stars at Whistler's Olympic Plaza, or gather with family and friends in the Village for a trip to the farmer's market, or an outdoor showing of a favourite film.

Whistler offers excellent **public elementary and high-schools for youth**, The community has a variety of public and private childcare settings, including Montessori and Francophone options. Youth programs are available at the Meadow Park Recreation Centre which includes a public pool and seasonal ice for hockey, figure skating and public/recreational skating. **Climbing gyms, libraries and youth oriented recreation programming** are also available.



WHISTLER 360

37979 Cleveland Ave, Squamish



Whistler 360 Health Collaborative Society is a team-based, community-governed model of excellence where health care professionals provide patient-focused, accessible, longitudinal care. Through its two primary care sites, the organization provides professionally managed clinical services to the community, priding itself in delivering exceptional care. More broadly, the organization demonstrates leadership in numerous issues that fall under the umbrella of healthcare in the community, and collaborates to address the social determinants of health.

If you're a Family Physician inspired to learn more about this clinical and leadership model, and you're curious about working in an innovative clinic setting in the heart of Whistler Village, we would love to speak with you.

Practice Details

- Positions are flexible, with opportunity to shift days and hours of work and free your time for all the activities Whistler is famous for.
- Overhead negotiable, with eligible candidates encouraged to explore the province of BC's "New to Practice" contract options, the "Longitudinal Family Practice" model, or the more traditional "Fee for Service" model of remuneration.
- Incredible staff. Professional management. Exceptional colleagues. Bring your skill and enthusiasm for full-practice primary care medicine and let the amazing community of Whistler help you feel you're home!



For more information, please contact the Recruitment Coordinator at recruitment@nsdivision.ca